



Washer - Extractor Variofex 17 T

Standard equipment:

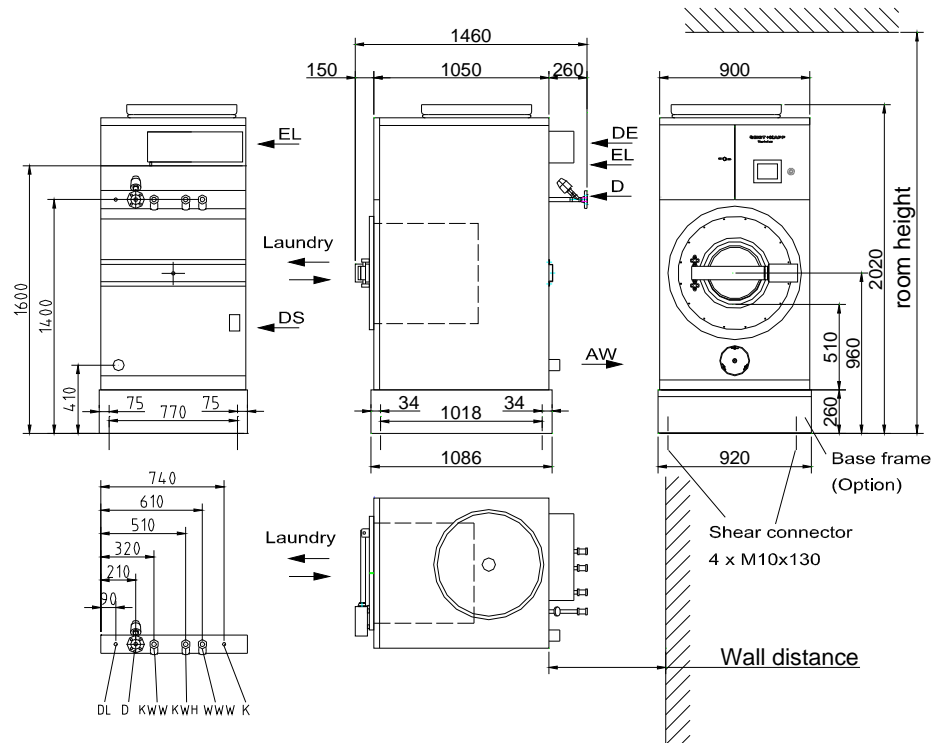
- Steam heating, direct, 3 – 13 bar with air-operated steam valve; alternative: electric heating with 18 kW connected load
- Frequency-controlled drive with infinitely variable drum speed for wash and extraction
- Electronic control with touch screen
- 3 removable flush-in hoppers for liquid and powdery detergents
- 1 connection point and up to 8 control facilities for dosing pumps
- Waste water valve
- Water connections for 1, 2 or 3 kinds of water
- Colour: S+K - blue
- Operational data collection with interface to external data processing system



Optional Equipments:

- Steam heating, indirect, 3 – 13 bar with air-operated steam valve, without condensate trap
- Oil circulating heating up to 5 bar, with air-operated valve
- Water recovery tank
- Waste water pump with filter for foreign objects
- Base frame, 26 cm high
- Liquor re-circulation system for WetClean or short liquor processes
- 4 additional connection points for dosing pumps
- Connection to an external water recovery system
- PNEUMA-LOAD-System for automatic loading and barrier separation
- Software for programming and changing of washing programmes at customers PC
- Other options on request

Loading capacity: (dry linen)	14 [kg]	15,5 [kg]	17 [kg]
Filling ratio	1:12	1:11	1:10
Drum cylinder	Diameter 600 [mm]	Depth 600 [mm]	Volume 170 [l]
Rotating speed	Washing 22 – 45 [U/min]	Spinning 350 – 1160 [U/min]	g-factor spinning 40 – 450
Connected loads (The connected loads will be used shortly. The consumptions are much lower and are depending on wash-programmes)			
Electric Drive motor 2,1 [kW]	Fuse Drive motor 3 x 10 [A]	Electric heating 18 [kW]	Fuse Electric heating 3 x 35 [A]
Steam heating 3 -13 bar 80 [kg steam / h]	Water intake for any kind [60 l/min] *1	Waste water max. 95 °C 200 [l/min]	Compressed air 5-7 bar 10 [l/min]
Emission	Noise at washing 52 [db(A)]	Noise at max. spinning speed < 73 [db(A)]	Heat rate 1,3 [kW]*2
Weights:	Weight of the empty machine 560 [kg]	Max. weight with filled tank 780 kg	Weight of the sea crate 125 [kg]



If “Cold Water Hard” and / or “Hot Water Soft” are not available, please connect to “Cold Water Soft”.

EL	Electric connection, 3x400V / 50Hz	KWW	Cold water soft, female thread G ¾ “
D	Steam, flange DIN 2633, DN20 with oil circulation heating runback (option)	KWH	Cold water hard, female thread G ¾ “,
K	Condensate connection (indirect heating) flange DIN 2633, DN 20 (option) with oil circulation heating run forward(option)	WWW	Hot water soft (60°C-70°C), female thread G ¾ “ ,
AW	Waste water , HT-pipe DN 70	DS	Detergent connection, 1x diameter 16 mm , 4x diameter 10 mm (Option)
DL	Compressed air, DN 8	DE	Electric connection for detergent device 24 V DC for switching relay at site

Entrance dimensions: Width 950 [mm] Height 1850 [mm]

Wall distance: minimum 700 mm,
 PNEUMA-LOAD Ø250: 1000 mm
 Recommended front space: 1500 mm
 Side spacemnt: not necessary

Room height: minimum 2350 mm,
 PNEUMA-LOAD Ø250: 2540 mm
 (incl. base frame)

*1 The minimum floating pressure for all kinds of water is 2.5 bar. Recommended water hardness: 2-6°dH.

*2 Average heat rate at a standard washing programme 60/90°C.

Subject to alterations